

# ColourVUE®



INTRODUCING

**RAYA SERIES**

MADE WITH PREMIUM SILICONE  
HYDROGEL FOR TOTAL COMFORT

**THE ONLY BRAND TO PASS  
ALL SAFETY & COMFORT TESTS**

CONDUCTED BY OPTICAL EXPRESS EXPERTS - UK

## Maxvue Vision: A Global Leader in Contact Lenses

Maxvue Vision is a leading manufacturer and distributor of contact lenses in Asia. The company has been awarded numerous accolades for its innovative products, high quality standards, and commitment to customer service.

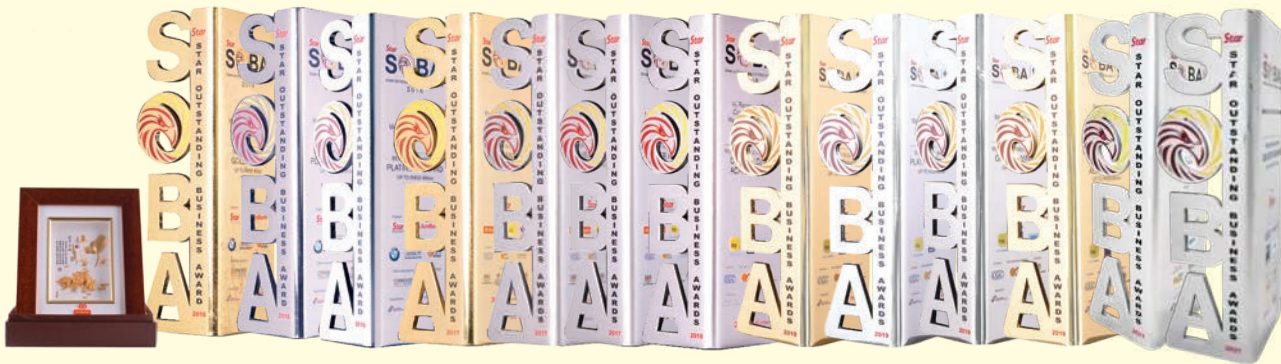
### Export Excellence Gold Award

Ministry of International Trade and Industry



4 Star Ranking by SME Corp, Ministry of International Trade and Industry for high level implementation of Automation, System, Compliance certification and an Exporter

### 5 YEARS IN A ROW GRAND WINNER OF 14 SOBA AWARDS



- ◆ MALAYSIAN BUSINESS OF THE YEAR (2016 & 2019)
- ◆ BEST BRAND (2016)
- ◆ BEST IN MARKETING (2016 & 2017)
- ◆ BEST IN GLOBAL MARKET (2016 & 2019)
- ◆ BEST IN CSR (2017, 2019 & 2021)
- ◆ BEST INNOVATION (2017)
- ◆ FEMALE ENTREPRENEUR OF THE YEAR (2018)
- ◆ MALE ENTREPRENEUR OF THE YEAR (2019)
- ◆ BEST EMPLOYER (2021)

### Certificates



Best Branding Effort 2015/2016



Outstanding Entrepreneur 2014, NSIE



GOPIO International Excellence Awards 2013



Industry Excellence 2016



Malaysia Medical Device Authority



US FDA

MODEL IS WEARING  
RAYA ASH

The perfect way to add depth and  
definition to your eyes.



MODEL IS WEARING BROWN

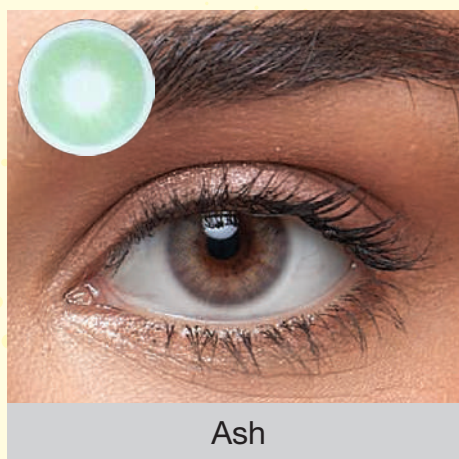
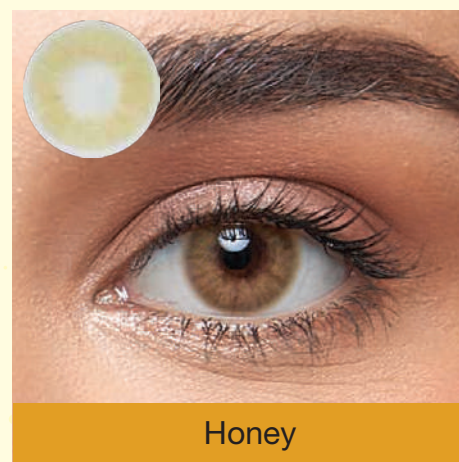
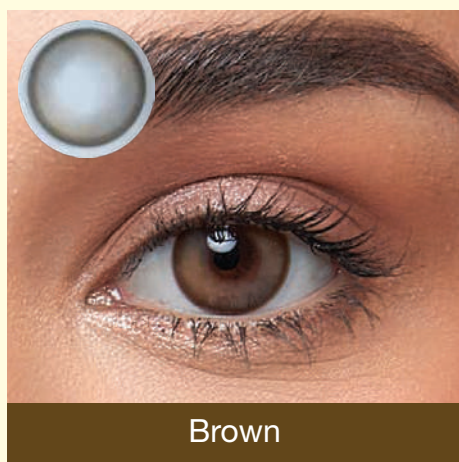
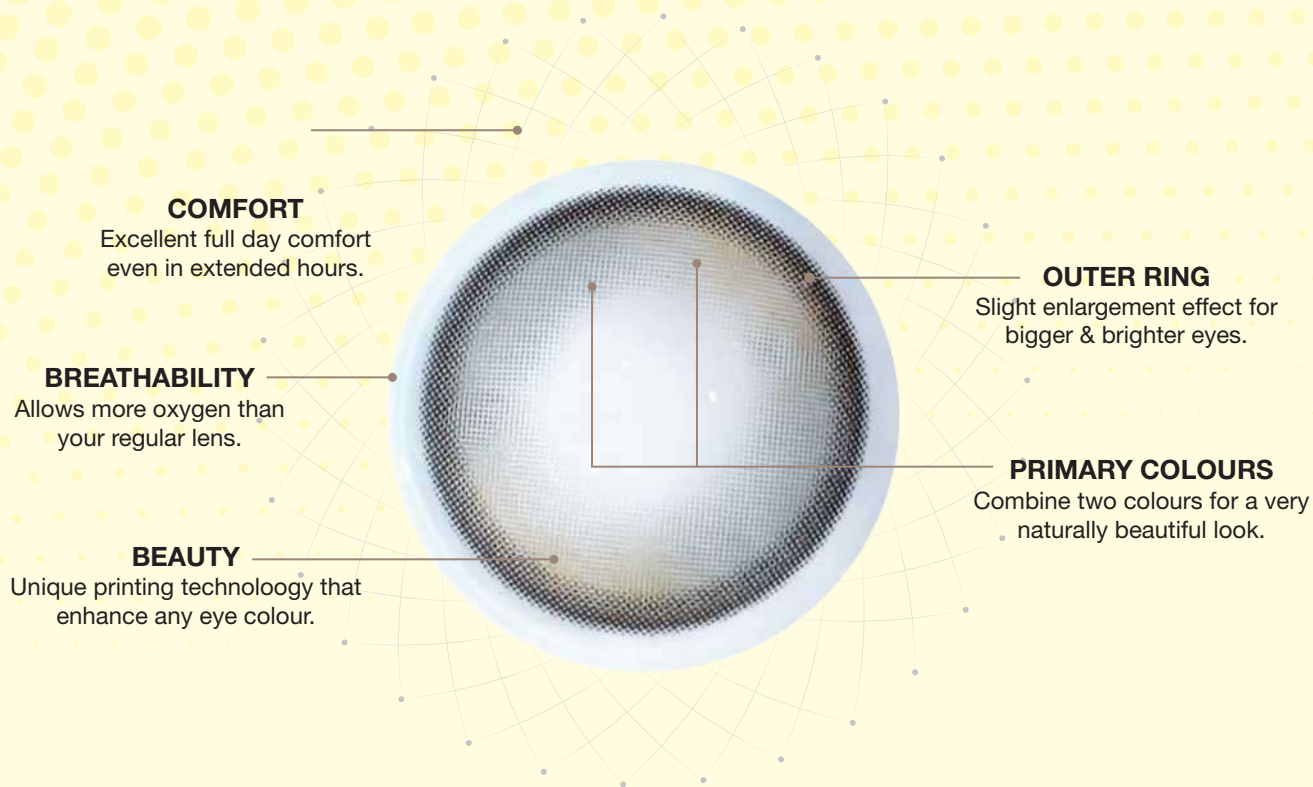
# Raya

– Fine Heritage  
Through New Technology

Just like the Malaysian fine “Batik” art of making traditional clothing, we carefully crafted the RAYA series with the finest colour printing using latest materials and processes. It’s made with stable and proven Airsoft silicone hydrogel material to ensure that your eyes continue to breath, remain healthy, and white for long hours. Our fine dotted design, borrowed from Lumina production, created this exceptionally natural and beautiful looking lens.



# BREATHABILITY, COMFORT & BEAUTY - BEST 3 IN 1 LENS



## SPECIFICATIONS

<b>Replacement</b>	Monthly
<b>Water content</b>	42%
<b>Power</b>	Plano (0.00) -0.50 to -5.00 (0.25 steps) -5.50 to -8.00 (0.50 steps)
<b>Fitting</b>	BC: 8.6mm DIA: 14.0mm



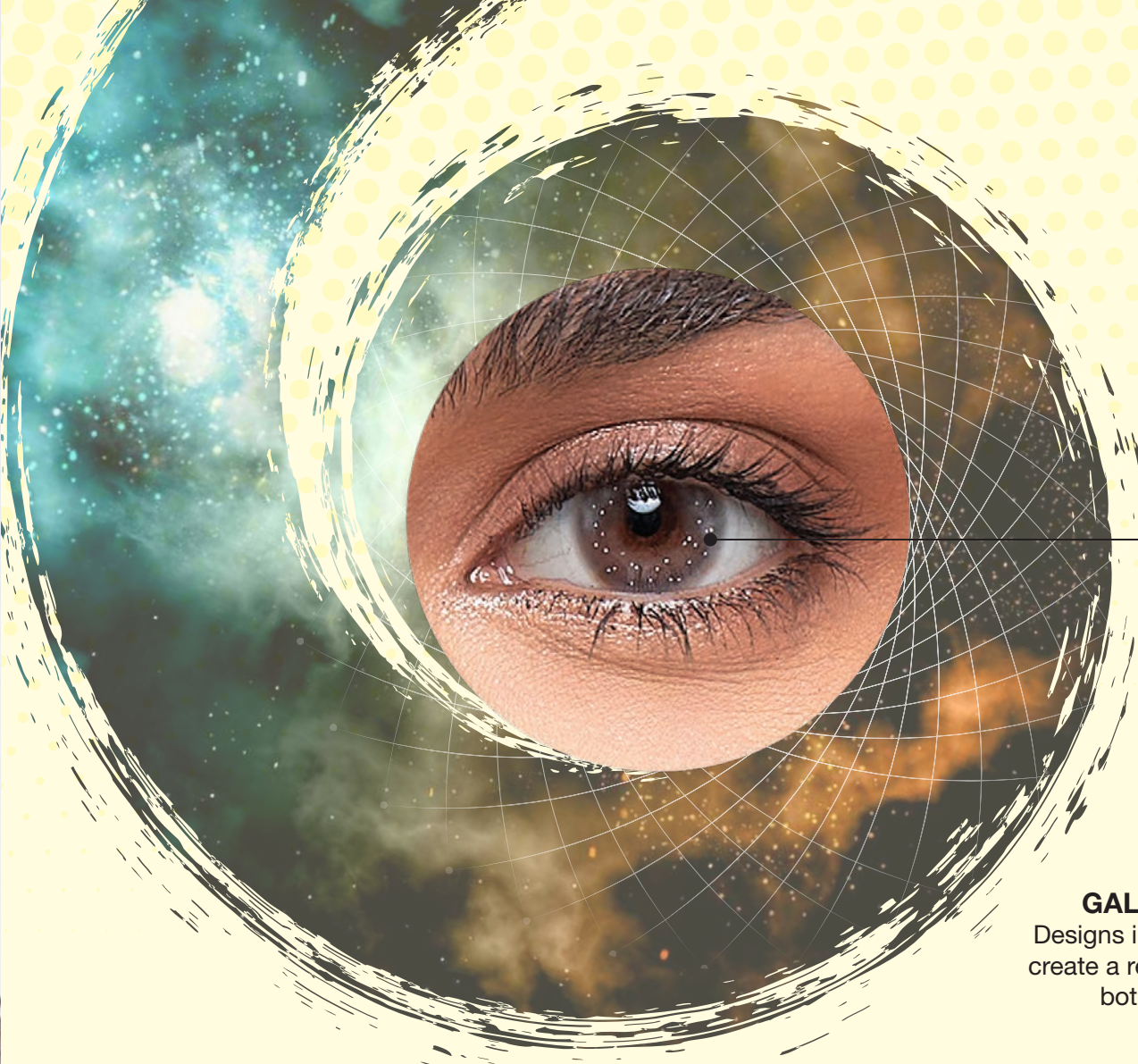
MODEL IS WEARING  
JASPER

A mesmerizing spectrum of colors that will make your eyes the object of desire.

# Rayya

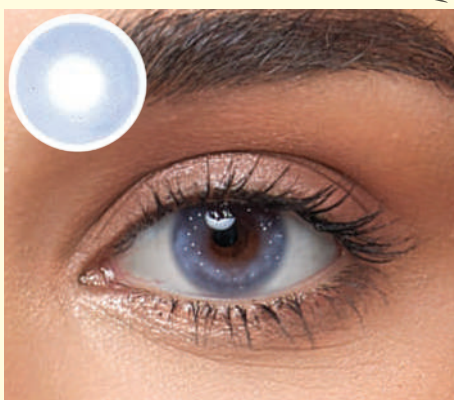
PREMIUM

Silicone Hydrogel Coloured Contact Lenses



**GALAXY EFFECTS**

Designs inspired by the galaxy create a remarkable look that is both eye-catching.



Topaz



Jasper



Quartz

**SPECIFICATIONS**

<b>Replacement</b>	Monthly
<b>Water content</b>	42%
<b>Power</b>	Plano (0.00) -0.50 to -5.00 (0.25 steps) -5.50 to -8.00 (0.50 steps)
<b>Fitting</b>	BC: 8.6mm DIA: 14.0mm

MODEL IS WEARING  
SHINNING BROWN

Lumina Will Make Your  
Eyes the Center of  
Attention

**LUMINA**

Luxury, safety, and comfort, all in one lens.



Bright Crystal



Dazzling Mint



Glowing Grey



Radiant Aqua



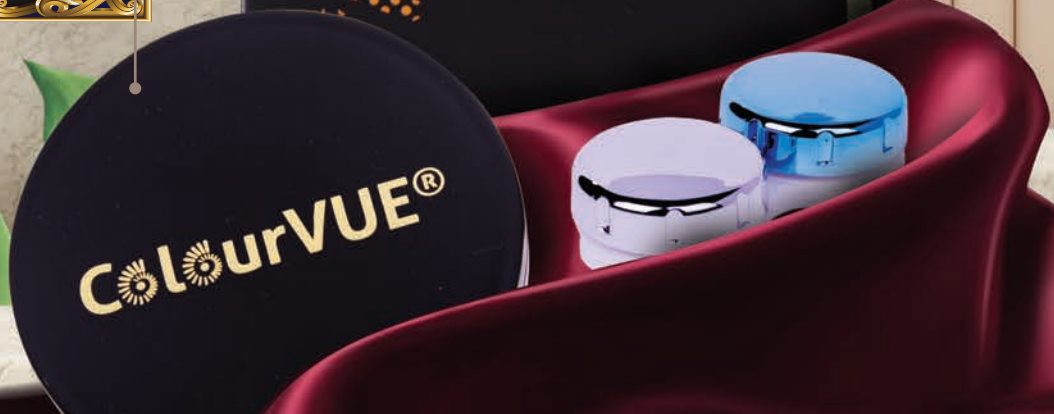
Shinning Brown

**SPECIFICATIONS**

<b>Replacement</b>	3 Months
<b>Water content</b>	42%
<b>Power</b>	Plano (0.00) -0.50 to -5.00 (0.25 steps) -5.50 to -8.00 (0.50 steps)
<b>Fitting</b>	BC: 8.6mm DIA: 14.0mm

Lumina comes with an exclusive packaging and lens case.

Get an extra luxury handbag mirror with purchase of 1 pair absolutely free.

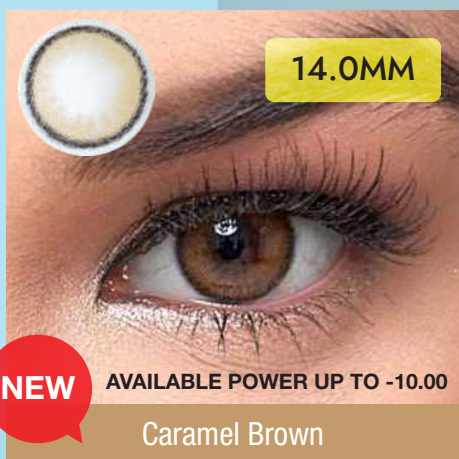
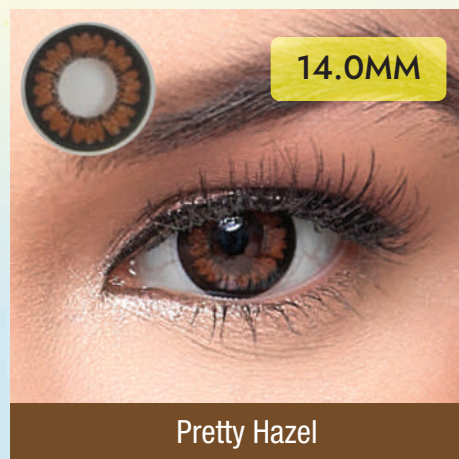
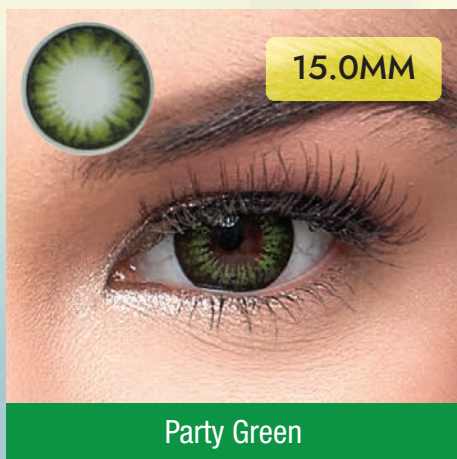
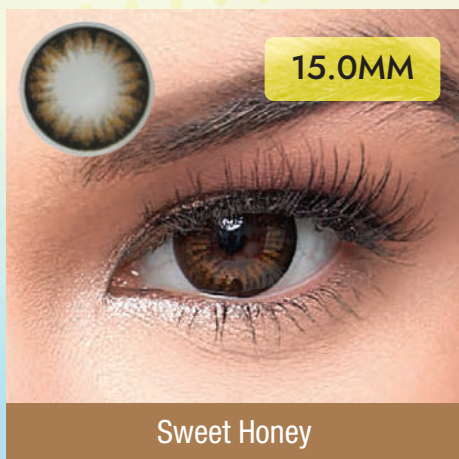
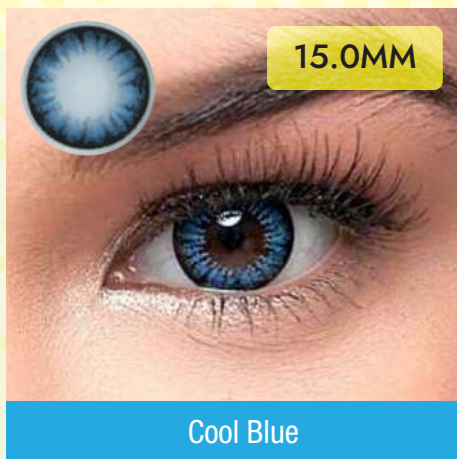
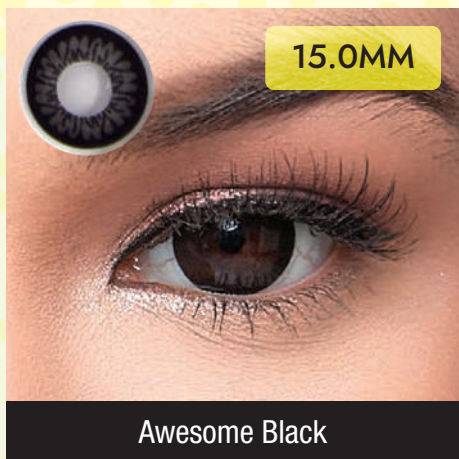


Leave a Lasting  
Impression with  
Stunning Big Eyes!

MODEL IS WEARING  
PRETTY HAZEL

**BigEyes**

Dolly like big eyes effect



**SPECIFICATIONS**

<b>Replacement</b>	3 Months
<b>Water content</b>	42%
<b>Power</b>	Plano (0.00) -0.50 to -5.00 (0.25 steps) -5.50 to -8.00 (0.50 steps)
<b>Fitting</b>	BC: 8.6mm DIA: 14.0mm & 15.0mm





MODEL IS WEARING  
BROWN

Elevate Your Look with  
Seamless Color Harmony

**3 Tones** Perfect Colour Blending Technology



Aqua



Ash



Blue



Brown



Green



Grey



Mint



Violet

### SPECIFICATIONS

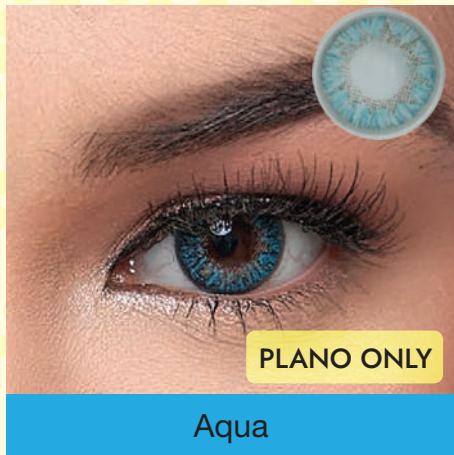
Replacement	3 Months
Water content	42%
Power	Plano (0.00) -0.50 to -5.00 (0.25 steps) -5.50 to -8.00 (0.50 steps)
Fitting	BC: 8.6mm DIA: 14.0mm



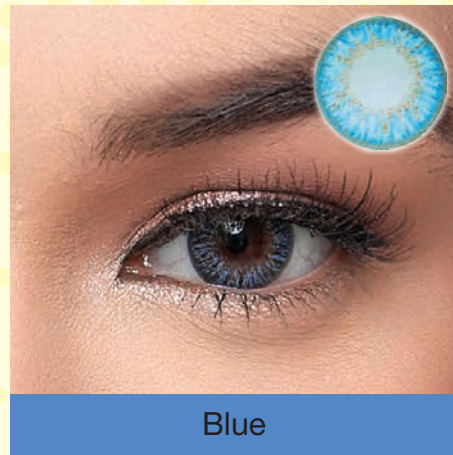
Express Yourself Daily:  
Colored Lenses with  
Long-Hour Comfort  
and Endless Choices.

MODEL IS WEARING  
AQUA

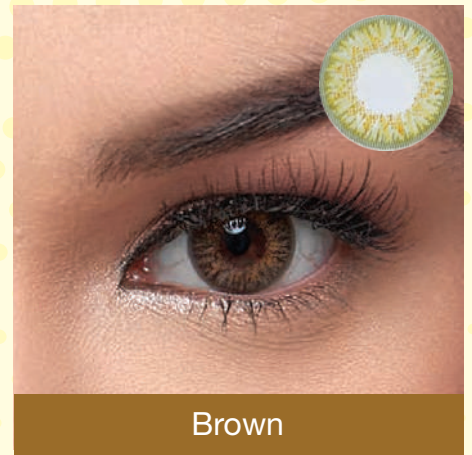
**TruBlends ONE-DAY** Colours Your Active Lifestyle



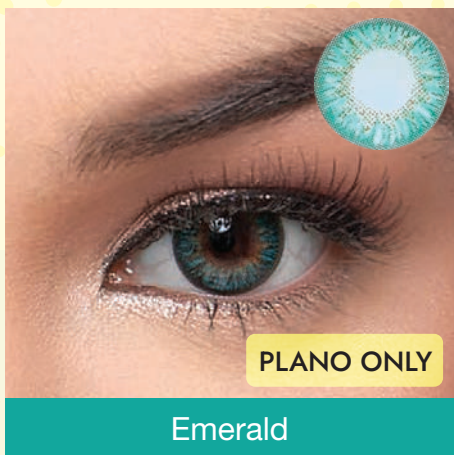
Aqua



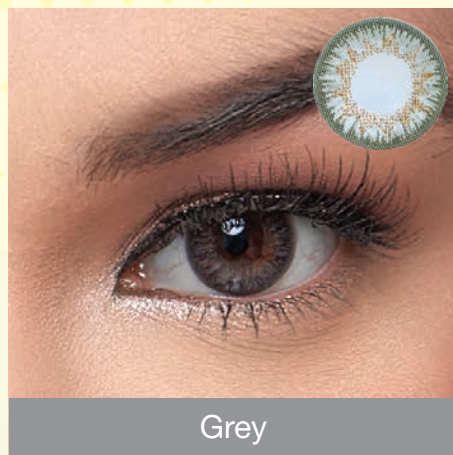
Blue



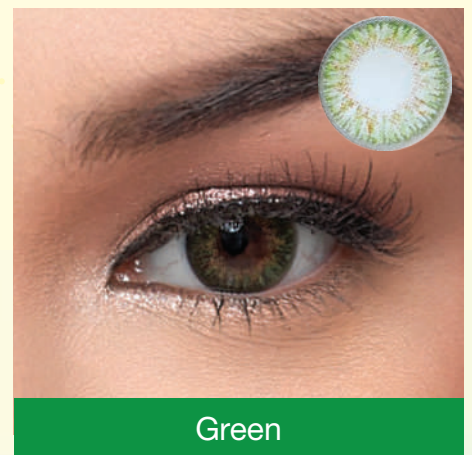
Brown



Emerald



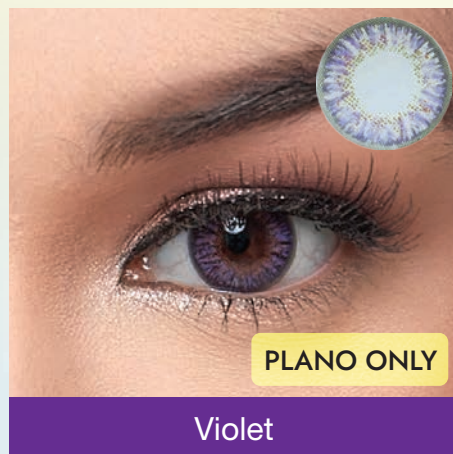
Grey



Green



Hazel



Violet

### SPECIFICATIONS

<b>Replacement</b>	Daily
<b>Water content</b>	42%
<b>Power</b>	Plano (0.00) -0.50 to -5.00 (0.25 steps) -5.50 to -8.00 (0.50 steps)
<b>Fitting</b>	BC: 8.6mm DIA: 14.2mm
<b>Packaging</b>	10 lenses per box



### RAINBOW PACK EDITION

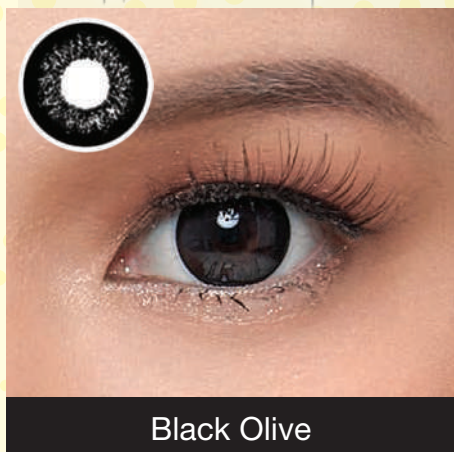
#### PLANO ONLY

- Pack 1: Blue, Green, Hazel, Brown & Grey
- Pack 2: Violet, Aqua, Emerald, Blue & Green

MODEL IS WEARING  
CHEERFUL WOODY BROWN

Discover the Magic:  
Effortless Blending Colour  
for Naturally Mesmerizing  
Eyes

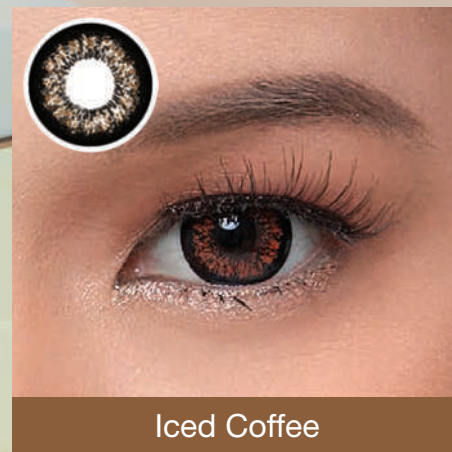
# Sparkle



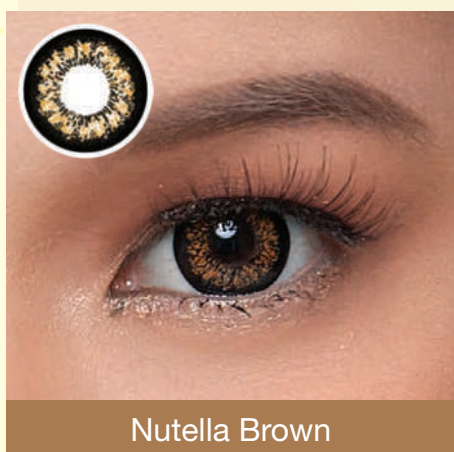
Black Olive



Grey Mushroom



Iced Coffee



Nutella Brown

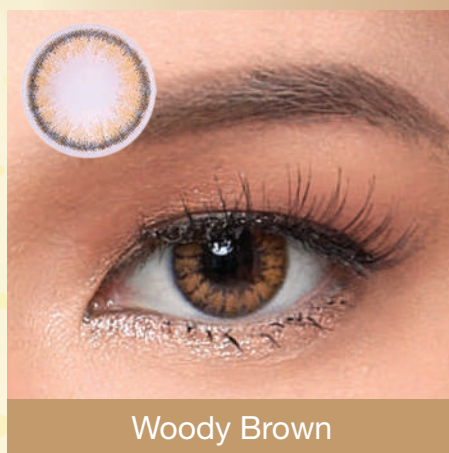


# Cheerful

Brighten Your Happiness



Carbon Grey



Woody Brown

## SPECIFICATIONS

<b>Replacement</b>	Monthly
<b>Water content</b>	42%
<b>Power</b>	Plano (0.00) -0.50 to -5.00 (0.25 steps) -5.50 to -8.00 (0.50 steps)
<b>Fitting</b>	BC: 8.6mm DIA: 14.5mm



MODEL IS WEARING  
FIZZY MYSTIC PEARL

Unveil Your True Radiance:  
Effortless Blending Color  
Lenses for Naturally  
Mesmerizing Eyes

# TruBlends



Blue



Brown



Grey



Hazel



Green

## SPECIFICATIONS

<b>Replacement</b>	Monthly
<b>Water content</b>	42%
<b>Power</b>	Plano (0.00) -0.50 to -5.00 (0.25 steps) -5.50 to -8.00 (0.50 steps)
<b>Fitting</b>	BC: 8.6mm DIA: 14.2mm

# FIZZY



Lushy Brown



Mystic Pearl

## SPECIFICATIONS

<b>Replacement</b>	Monthly
<b>Water content</b>	42%
<b>Power</b>	Plano (0.00) -0.50 to -5.00 (0.25 steps) -5.50 to -8.00 (0.50 steps)
<b>Fitting</b>	BC: 8.6mm DIA: 14.0mm



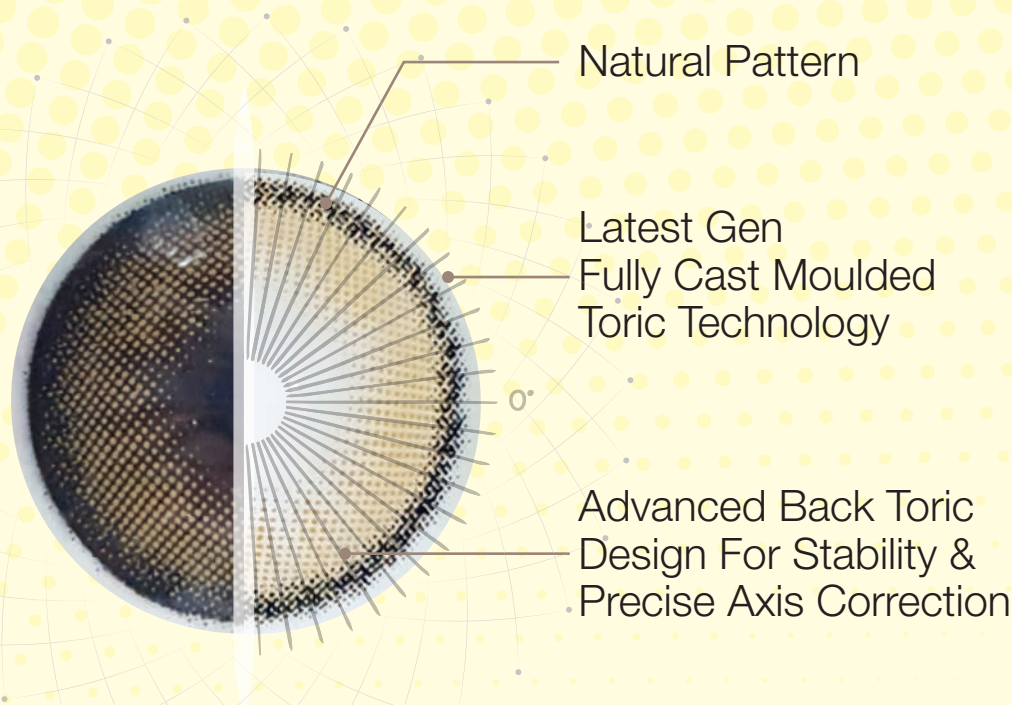
MODEL IS WEARING  
PLATINUM GREY

Elevate Comfort, Embrace  
Beauty: Perfect Precision &  
Safety in Stylish Eye Correction



RxTORIC

Custom made coloured toric lens with your exact prescription



Platinum Grey



Caramel Brown

\*The estimated delivery time for custom-made toric lenses will be approximately 1 month.

\*\*A minimum order of 1 pair is required, and customers have the option to mix power.



**SPECIFICATIONS (STOCK)**

<b>Replacement</b>	3 Months
<b>Water content</b>	42%
<b>Stock Power</b>	Plano (0.00) -0.25 to -6.00 (0.25 steps) -6.50 to -10.00 (0.50 steps)
<b>Stock Axis</b>	180°
<b>Stock Cylinders</b>	-0.75, -1.25, -1.75, -2.25, & -2.75
<b>Fitting</b>	BC: 8.6mm DIA: 14.0mm
<b>Packaging</b>	1 lens per box

**SPECIFICATIONS (RX ORDER)**

<b>Replacement</b>	3 Months
<b>Water content</b>	42%
<b>RX Power</b>	Plano (0.00) -0.50 to -6.00 (0.25 steps) -6.50 to -10.00 (0.50 steps)
<b>RX Axis</b>	10° to 170° (10° steps)
<b>RX Cylinders</b>	-0.75, -1.25, -1.75, -2.25, -2.75, -3.25, -3.75 & -4.25
<b>Fitting</b>	BC: 8.6mm DIA: 14.5mm
<b>Packaging</b>	1 lens per box

# Crazy Lens

World's No. 1 Crazy Lens Brand

## Daily Disposable



## Prescription Crazy Lens



## Glow UV lenses



## Yearly Disposable



Want to see more designs? Just scan the QR code or visit our website <https://www.colourvue-lens.com>

# Max OptiFresh® bioplus

## Bio-Inspired Solution, Protect Like Your own Tears



Fights lens dehydration due to pollution & varying environmental conditions



Safeguard lens from germs, proteins & lipids



Ideal for patients that find lenses dry out at the end of the day



Locks in moisture & retains it in dry environments

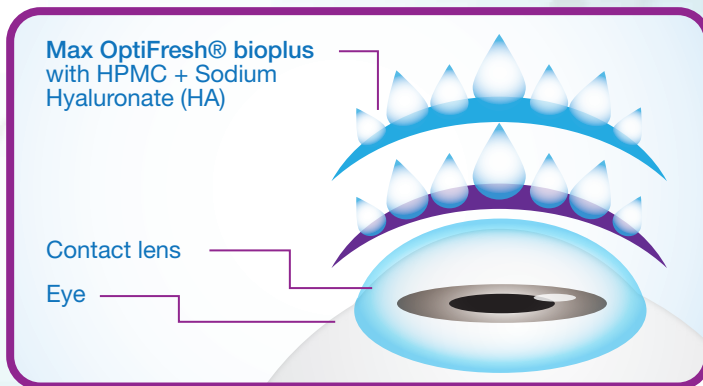


Formulated for patients with dry & sensitive eyes



Balances pH level to match healthy tears

### Double Moisturizing Effect



#### Double Moisturizing Effect

- Extra protection against the corneal surface
- Reduce ocular surface damage

#### HA & HPMC:

- Forms a lubricating shield on the lens
- Conditions lens, seals in moisture
- Slowly releases it throughout the day.



- ✔ Max OptiFresh® bioplus was associated with a statistically significant improvement in initial comfort, end day comfort, clear vision and enhanced overall lens wearing experience more effectively than test subjects previous solution.
- ✔ More than 92% agree Max OptiFresh® bioplus enhance overall lens wearing experience.
- ✔ More than 93% will continue using Max OptiFresh® bioplus.



\*Available in 60ml, 100ml and 360ml

# INTERNATIONAL EVENTS



Optic Munich  
Germany



MIDO  
Italy



Vision X  
Dubai, UAE



Optical Fair  
Hong Kong



Malaysia Optical Fair  
Malaysia



Optra Fair  
London, UK



PLMA  
Amsterdam, Netherlands



Miss Singapore Beauty Pageant  
Singapore



Comic Fiesta  
Malaysia

# RETAILERS WORLDWIDE



Alain Afflelou  
France



Germany



France



Greece



Lebanon



Romania



Papua New Guinea



Brunei



France

# INTERNATIONAL DISTRIBUTORS & RESELLERS

## Africa

- Algeria
- Kenya
- Libya
- Madagascar
- Martinique
- Mauritius
- Nigeria
- Rwanda
- South Africa
- Tanzania
- Uganda

## Oceania

- Australia
- Fiji islands
- Guam

## America

- Brazil
- Chile
- Colombia
- Ecuador
- Uruguay
- USA

## Middle East

- Bahrain
- Egypt
- Iran
- Iraq
- Jordan
- Kuwait
- Oman
- Palestine
- UAE
- Yemen

## Asia

- Armenia
- Bangladesh
- Brunei
- Hong Kong
- India
- Indonesia
- Malaysia
- Maldives
- Myanmar
- Nepal
- Singapore
- Sri Lanka
- Vietnam

## Europe

- Albania
- Belarus
- Belgium
- Bulgaria
- Cayman Islands
- Czech Republic
- Estonia
- Finland
- France
- Germany
- Greece
- Hungary
- Italy
- Kosovo
- Latvia
- Greenland
- Lithuania
- Moldova

- Netherlands
- New Zealand
- Norway
- Poland
- Portugal
- Réunion Island
- Romania
- Russia
- Serbia
- Slovakia
- Spain
- Sweden
- Switzerland
- Trinidad and Tobago
- United Kingdom

Leading chain customers:



Member of:



Clinical partners:





MODEL IS WEARING  
TRUBLEND'S AQUA

MODEL IS WEARING  
BIG EYES PLATINUM GREY

Comfortable Coloured  
Contact Lenses: Wear  
Them All Day Long



The models are wearing three different contact lens colours from left to right: Big Eyes Cool Blue, Raya Ash, and Raya Brown.

## MAXVUE VISION (HQ)

No.280B, Jalan Haruan 1, Oakland Industrial Park,  
70300 Seremban, Negeri Sembilan, MALAYSIA

W. [www.maxvuevision.com](http://www.maxvuevision.com) | [www.colourvue-lens.com](http://www.colourvue-lens.com)  
T. +606 761 6797 F. +606 764 7906



ColourVUE



colourvue\_official

## MAXVUE VISION (KL)

3A-2, Jalan SU 1E, Persiaran Sering Ukay 1, Sering Ukay,  
68000 Ampang Jaya, Selangor

W. [www.maxvuevision.com](http://www.maxvuevision.com) | [www.colourvue-lens.com](http://www.colourvue-lens.com)  
T. +603-4161 3575 WS. +6019-337 6797



ColourVUE in Malaysia



colourvue\_malaysia

## MAXVUE VISION (INDIA)

No.8, 2nd floor. Kalaingar High Road.  
Srinivasanagar. Peerankarnai. Chennai. INDIA

W. [www.maxvuevision.com](http://www.maxvuevision.com) | [www.colourvue.co.in](http://www.colourvue.co.in)  
T. +9841718156



ColourVUE India

## MAXVUE VISION PTE LTD (SINGAPORE)

8, Burn Road #06-08 Trivex  
369977 SINGAPORE

W. [www.maxvuevision.com](http://www.maxvuevision.com) | [www.colourvue.com.sg](http://www.colourvue.com.sg)  
T. +65 65098220 F. +65 65098250



ColourVUE Singapore

ColourVUE®, Maxvue Hydrosoft™, Max OptiFresh®, Bioplus™, Airsoft™ & Funny Lens™ are registered trademarks of MAXVUE VISION SDN BHD.  
All rights reserved. Copyright © MAXVUE VISION SDN BHD

CV-MY-CAT2023-V1